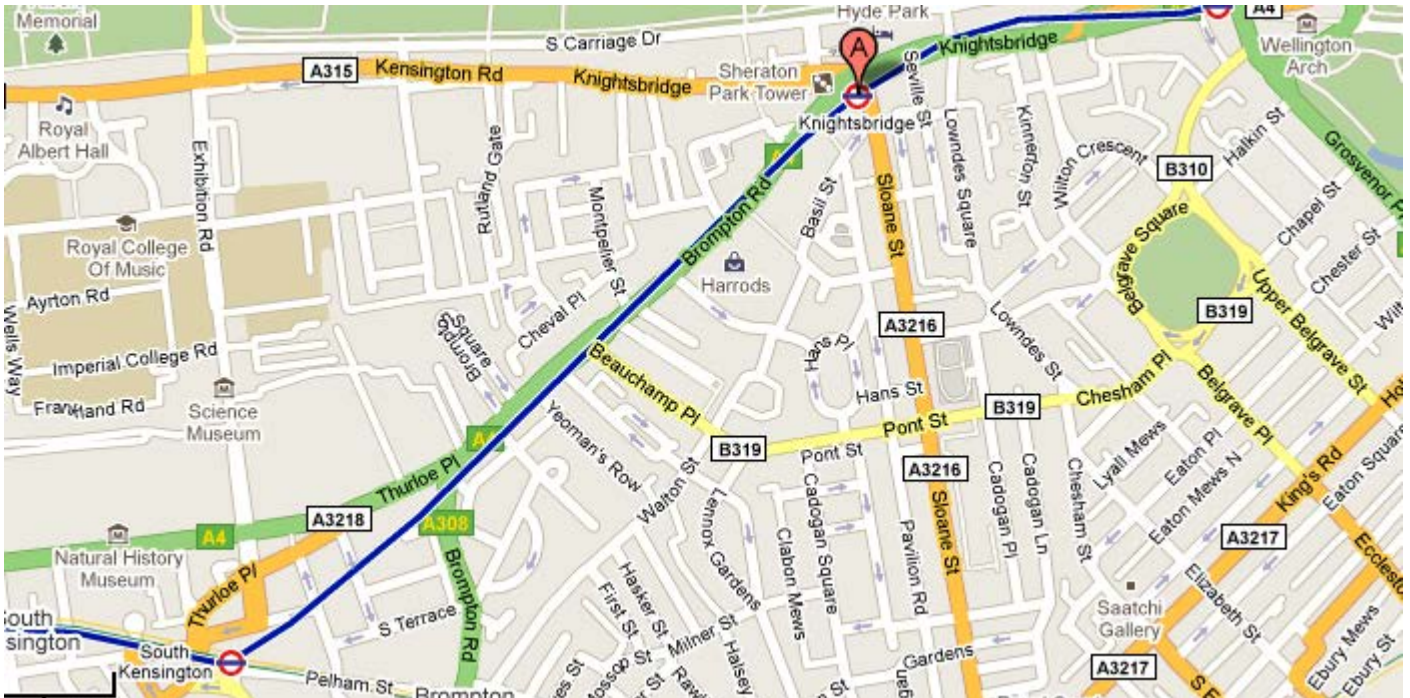


Knightsbridge

Knightsbridge is the famous street and district that is located in the exclusive west of Central London. It is a notable district with many attractions surrounding the area including Hyde Park and Sloane Street as well as being the home to up market [shopping](#) department stores such as Harrods and Harvey Nichols. Knightsbridge is also the home to London based shoe designers Manolo Blahnik and Jimmy Choo as well as providing two Chanel stores in the area. Knightsbridge is the shoppers dream with fast transport links across Central and Greater London.



Map of the Knightsbridge area

Transport






Knightsbridge is serviced by the Underground station Knightsbridge (Piccadilly line) where you will find speedy access to Green Park, Gloucester Road, Hyde Park Corner and Piccadilly Circus.

Liverpool Street: 29 minutes
 Waterloo: 19 minutes
 Euston: 20 minutes
 West End (Oxford Circus): 17 minutes

Canary Wharf: 32 minutes
 Bank: 26 minutes
 Victoria: 16 minutes
 Heathrow: 43 minutes

In addition, Knightsbridge benefits from extensive [bus services in the area](#), providing road access to major parts of London and the surrounding areas.

For more information and reservations:

 +44 (0)8456 8000 80
 info@refreshaccommodation.com
 www.refreshaccommodation.com

Click links for more details
[Property Promotions](#)
[Terms & Conditions](#)

Eating

[San Lorenzo](#) (22 Beauchamp Place, SW3 1NH)

San Lorenzo was a favourite of Princess Diana and is known to be a celebrity hangout as well as providing customers with professional service and Italian food and good wine. Set in a basement the restaurant boasts eclectic artwork and a great atmosphere.

You may also enjoy:

[O Fado](#) (50 Beauchamp Place, SW3 1NY) - traditional Portuguese restaurant

[Emporio Armani Caffé](#) (191 Brompton Road, SW3 1NE) - stylish Italian cuisine



Going out

[Royal Albert Hall](#) (Kensington Gore, London SW7 2AP)

The building has a tremendous history and is one of London's greatest attractions. Not only does the Royal Albert Hall host concerts for all music tastes it also offers a place for exhibitions, scientific conversations, public meetings and award ceremonies.

You may also enjoy:

[Amaya](#) (Halkin Arcade, Motcomb Street, London, SW1X 8JT) - authentic Indian cuisine

[Royal Court Theatre](#) (Sloane Square, London, SW1W 8AS) - Britain's leading national theatre company



Local attractions

[Harvey Nichols](#) (109-125 Knightsbridge, Knightsbridge, London, SW1X 7RJ)

This is one of the renowned fashion and lifestyle stores in the UK and overseas with an extensive range of luxury items everyone would love to own.

[Harrods](#) (87-135 Brompton Road, London SW1X 7XL)

Harrods is one of the world's most famous luxury department store, not only famous for luxury brands and items across the beauty, accessory and fashion lines, but also for their infamous Food Hall.

[V&A](#) (Cromwell Road, London SW7 2RL)

This is one of London's most famous museum and one of the world's greatest museum for arts and design. Take a look through fashion, jewellery and accessory exhibits, historic artefacts and much more. A must visit place when in Knightsbridge.

[Cadogan Hall](#)

[Jane Austen's House Museum](#)

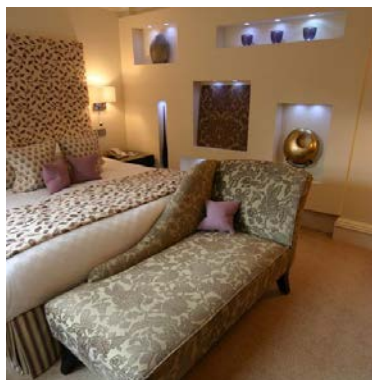
[Serpentine Gallery](#)

[Proms in the Park](#)

[Apsley House](#)



Recommended apartments in Knightsbridge



[Beaufort House](#), Knightsbridge, South West London

Beaufort House is situated in one of London's few remaining Regency terraces. It was completely rebuilt on the inside in the early 90's while the exterior facade remained unchanged. The result were 21 luxury apartments ranging from a cosy 1 bedroom Patio apartment to a luxury 4 bedroom apartment. Beaufort House is equipped with a fully fitted kitchen including washer/dryers, fridge freezers, oven, microwave and all except the one bedroom apartments have dishwashers. The one and two bedroom apartments have a combined living room and dining room, all others have separate dining and living rooms.

Prices From £1,974 Per Week

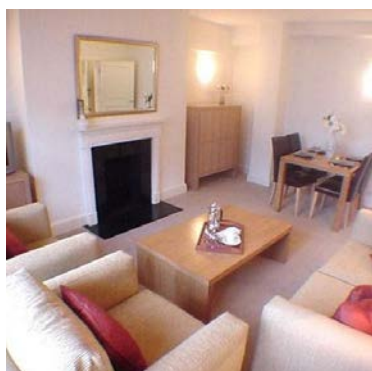


[Cheval Apartments](#), Knightsbridge, South West London

In a quiet residential area of fashionable Knightsbridge, just a stroll from Hyde Park, Harrods and Harvey Nichols, **Cheval Apartments** offer you a choice of discreet addresses with two or three bedrooms. Whether you opt for a townhouse, an apartment (many with private balcony) or one of the delightfully secluded mews houses, you enjoy the perfect combination of contemporary style and creature comforts.

For business travelers **Cheval Apartments** are within easy reach of the financial and legal districts, and also provide comfort and convenience with daily maid service, sophisticated security systems, direct dial telephones, satellite TV, DVD players and wireless broadband.

Prices From £2,588 Per Week



[Richmond Court](#), Knightsbridge, South West London

Richmond Court comprises of six stylish one bedroom apartments, all of which have been designed to maximise space and light and incorporate the highest specification of furnishings.

Set in an ideal location, Richmond Court is only a short walk away from some of London's finest shops and restaurants, such as the world renowned Harrods, Harvey Nichols and San Lorenzo, as well as being only a few minutes commute by Tube into the financial district.

Prices From £1,330 Per Week

[View our full range of Serviced Apartments in Knightsbridge](#)